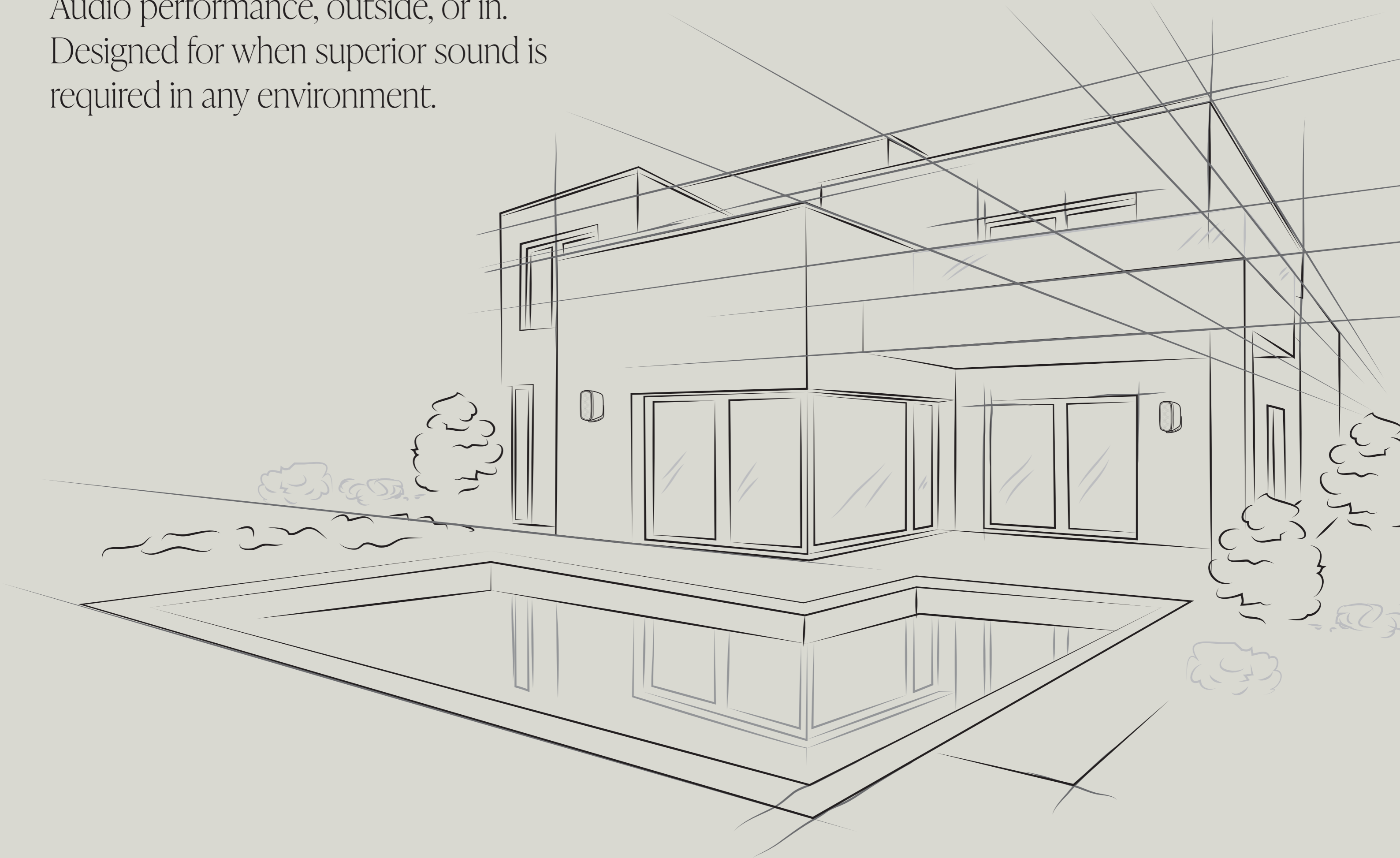


# Climate Series 3G

Climate Series 3G. High-fidelity Monitor  
Audio performance, outside, or in.  
Designed for when superior sound is  
required in any environment.









A contemporary weatherproof speaker range, ideally suited to delivering high-fidelity audio outside, or in.

Designed using Monitor Audio Group's Transparent Design Philosophy, the expertly crafted Climate Series 3G delivers innovative technologies and levels of detail in sound and product design usually found in Monitor Audio's premium high-fidelity loudspeakers. Climate Series 3G offers these same levels of performance and design outdoors and is the last word in highly versatile weatherproof loudspeakers.

Delivering an enhanced audio experience for the listener, Climate Series 3G utilises decades of acoustic experience and solid engineering principles, packaging them into an all-weather design that takes indoor performance outdoors.

Climate Series 3G is the ultimate outdoor speaker.









# High-fidelity innovation built inside for outside.

## 1 Quik-Link inspired connection system

Taking inspiration from Monitor Audio's Creator Series, the 'kettle-style' Quik-Link connection system is sealed away from the elements and robust in design. The die-cast wall bracket offers total versatility with placement and positioning, along with refreshingly quick and easy speaker installation.

## 3 Auxiliary Bass Radiator (ABR)

Both Climate Small and Climate Medium utilise an Auxiliary Bass Radiator (ABR) design. Taking up almost the entire rear of each speaker, the large ABR extends bass performance, allowing for a weighty but controlled low-end performance, ideal for use outside.

## 5 Tweeter

Monitor Audio's gold domed tweeter has been continually developed since it first appeared in 1988. Constant refinement has made it a precision instrument, capable of delivering clarity, realism and detail. It helps Climate Series 3G deliver the pristine clarity expected of the best premium speakers for inside, outside.

## 7 New crossover design

Delivering on Monitor Audio Group's Transparent Design Philosophy, Climate Series 3G's crossovers have been optimised for indoor and outdoor use. They are capable of delivering the acoustic performance demanded by today's connected consumer.

## 2 Impenetrable enclosure

To ensure that Climate Series 3G remains at its best whatever the weather, Monitor Audio's design team has created a fully sealed, moulded ABS cabinet. It's so good that it is rated to IP66, one of the toughest tests for weatherproof speakers.

## 4 Bass-mid driver

Monitor Audio has been leading the way in metal-cone driver design for over 40 years. Climate Series 3G makes use of the proven RST II, C-CAM cone. Light, strong, and piston-like, it sits in front of a powerful motor system, enabling impressive levels of travel and articulate LF/MF precision.

## 6 IP rating

Climate Series 3G achieves the weatherproof rating IP66. This means that both models are capable of remaining outside in the harshest of environments, and are impervious to dust, heavy rain or snow.





# Delivering speed and versatility of installation. Inspired by Creator Series.

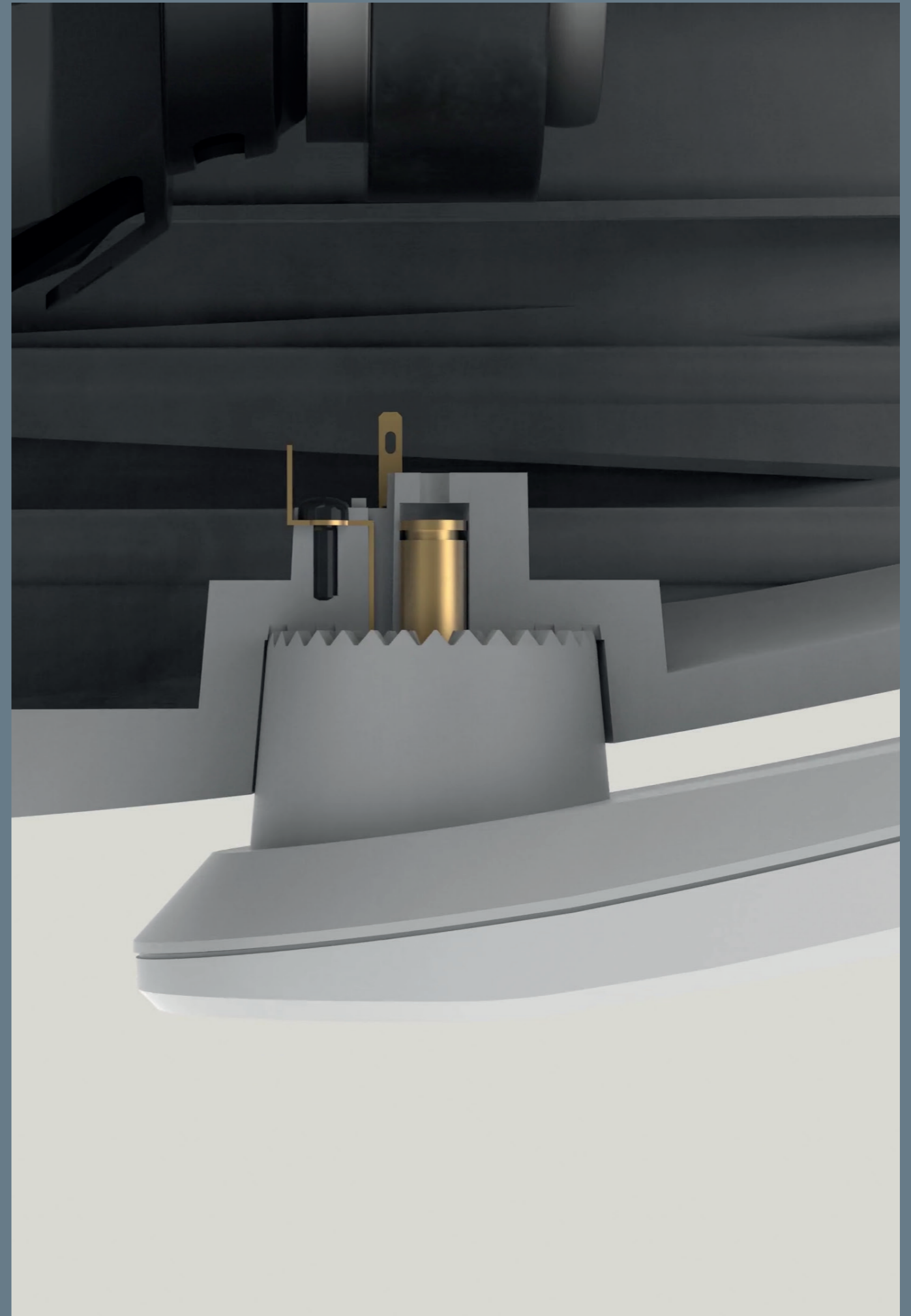
## Quik-Link bracket system

Climate Series 3G uses an ingenious die-cast aluminium bracket. Lightweight, yet incredibly strong, its intuitive design allows the range's two models to be positioned almost anywhere, with the minimum of hassle.

Inspired by Monitor Audio's patented Quik-Link connector, found on the architectural Creator Series, the new system enables the speaker bracket to be pre-fitted to a wall, in either the vertical or horizontal plain. Speaker cables can be pre-fitted to the internal speaker connectors that are within the bracket itself – all neatly hidden inside and behind protective rubber seals to prevent ingress from the elements.

Once positioned in its optimum location over the 'kettle-like' connector, a single substantial bolt secures the speaker in its desired position and holds it securely in place.

The bracket design allows a Climate Series 3G speaker to be rotated through 180 degrees in both the vertical and horizontal plane – so it can be 'aimed' into the desired location, whether that's in a restaurant, commercial space, or outdoor patio.





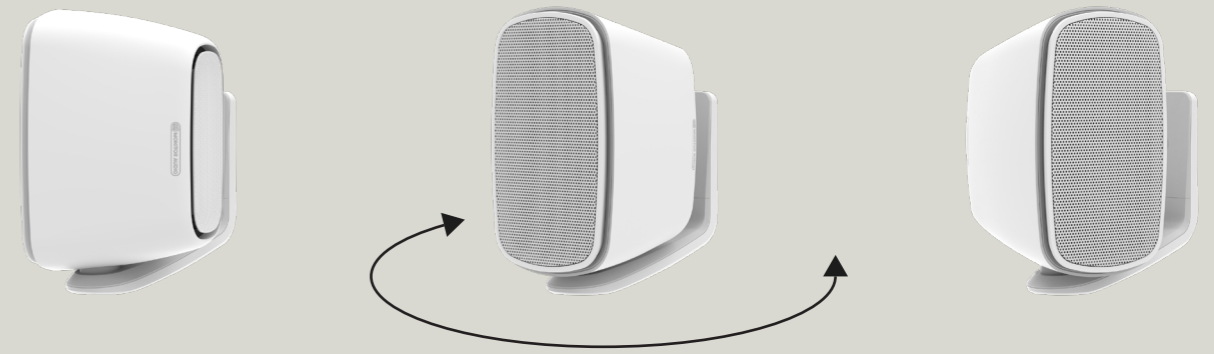
# Pinpoint sound in almost any direction.

**Climate Series 3G offers exceptional sound coverage in any direction.**

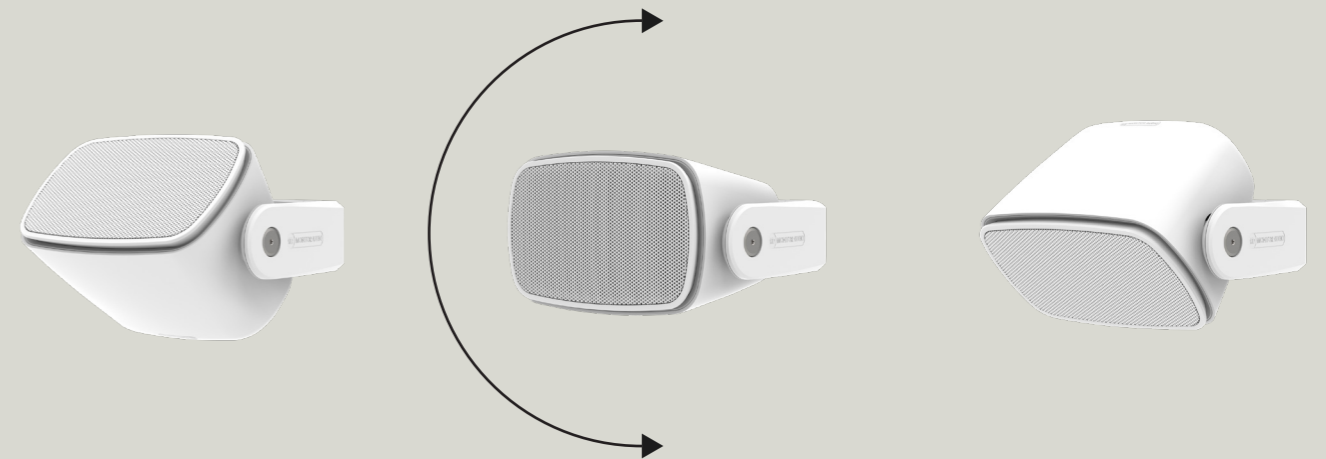
The 'Quik-Link' inspired bracket system on Climate Series 3G allows the speaker to rotate on its axis in almost any direction. This allows the sound to be easily directed into the desired location.

- The ratchet teeth on the bracket allow for 11.25-degree steps.
- There are 8 steps from 0 – 90 degrees to allow for numerous directional positions.

Once the user has positioned the speaker at the most appropriate angle for the installation, the speaker can then be securely tightened to the bracket with the single screw supplied.



In vertical plain, Climate Series 3G can rotate through: 90 degrees in a left or right direction.



In horizontal plain, Climate Series 3G can rotate through: 90 degrees in an upwards or downwards direction.



# A cabinet designed for total protection and superior audio performance.

## Impenetrable enclosure

To ensure Climate Series 3G stays at its best for many years, outside and in all weather conditions, Monitor Audio's design team created a completely sealed cabinet enclosure.

A one-piece moulded cabinet, made from dense ABS and reinforced with glass-fibre, protects the important elements within for a lifetime of use. A large Auxiliary Bass Radiator (ABR) and fully sealed front baffle housing the drive units, ensure the whole design can withstand the harshest of weather conditions.

After many hundreds of tests, to ensure there are no critical errors, Climate Series 3G received an IP66 rating, among the highest of weatherproof test results. This means users can deploy the hardy speakers with confidence that they will enjoy a lifetime of high-fidelity sound.

**IP66 Rated**





# Reliability & performance, guaranteed

The most rigorously tested product in Monitor Audio Group history, ensuring long lasting performance.

Each model and finish of Climate Series 3G has been subjected to a specially devised suite of testing - at the harshest extremes. Climate Series 3G is designed and proven to be reliable and performant for years to come.

- **Salt spray tested to MIL-STD 810**  
Conducted on individual components through to full assemblies, ensuring longevity of materials and product
- **UV Aging tested to double the length of any previous product**  
Making sure cabinetry, bracket and all parts continue to look their best through install life
- **Functional power tested at extreme temperatures**  
Assuring exceptional audio performance in sub-zero and high ambient temperature environments
- **Bracket weight holding tested**  
Tested to 5x the maximum product weight, ensuring strong, reliable product mounting
- **Drop tested to ISTA 1A**  
Verifying product reaches installers in pristine condition
- **Transit temperature tested**  
Proving product and finishes can survive the rigour of transit









# Articulate, powerful, full-range bass produced whatever the position.

## **ABR – extending Bass you can feel**

One of the most significant acoustic and design features of Climate Series 3G is the large, sealed Auxiliary Bass Radiator (ABR) on the rear of each model. The concave ABR panel, detailed with Monitor Audio's signature Hex pattern, is a key part of the acoustic package. Essentially working like a sealed port tube, it prevents ingress from the elements yet allows the bass to reach lower frequencies and deliver a satisfyingly full low-end performance, just as you would enjoy from a traditional ported design.

Climate Series 3G's ABR works in complete harmony with the tweeter and bass-mid driver. Moving pistonicly and in synchronicity with the air movement produced within the cabinet by the bass-mid driver, it extends the power handling for deeper, more powerful, highly controlled bass.





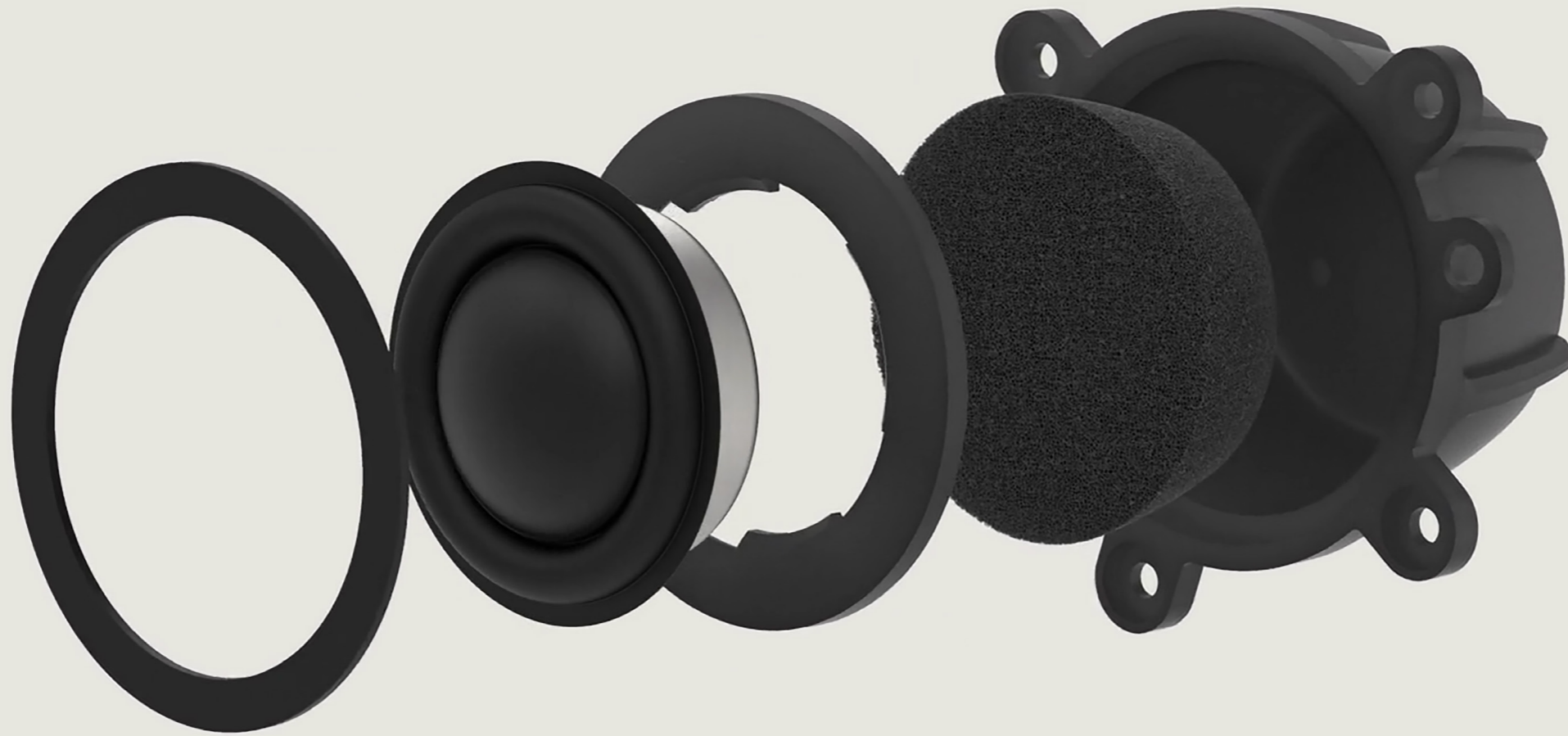
## RST II, C-CAM driver cones and powerful motor systems for total sonic performance.

### Strong, light and powerful – bass-mid drivers

Monitor Audio has been a world-leader in metal cone driver technology for over 40 years. The result of constantly innovating in this space, the Rigid Surface Technology II (RST II) has become a staple acoustic drive unit technology. Developed and honed over two-decades, RST II is a highly refined, precision tool, capable of being driven by the most powerful motor systems. The result: pistonic motion for total realism and clarity, and a precise high-fidelity, life-like sound that delivers a thrillingly enhanced audio experience.







## The acoustic heart of all Monitor Audio speakers, for total realism.

**Detail and clarity: the MA Gold Dome Tweeter... with a twist.**

The Gold Dome Tweeter is synonymous with Monitor Audio. Since it was first introduced in 1988, it has been a sign of the highest-quality, high-frequency performance.

To meet the requirements of discrete installations, Climate Series 3G features an enhanced gold C-CAM dome, but one coated in a deep black finish. The tweeter is still optimised to give the same high-fidelity, high-frequency performance as a regular gold C-CAM dome tweeter, it's just produced in deep black to match the black RST II bass-mid driver and, importantly, to provide ultra-discretion for internal or external speaker installation.

Quality, they say, is always in the details, and the black C-CAM dome tweeter does detail in spades; whatever music is played using it sounds exactly as the artist intended. Furthermore, due to its use across most of Monitor Audio's arsenal of custom installation models, timbre matching is effortless, and a 'whole-house sound' is easily achievable. With Monitor Audio, total performance is assured.

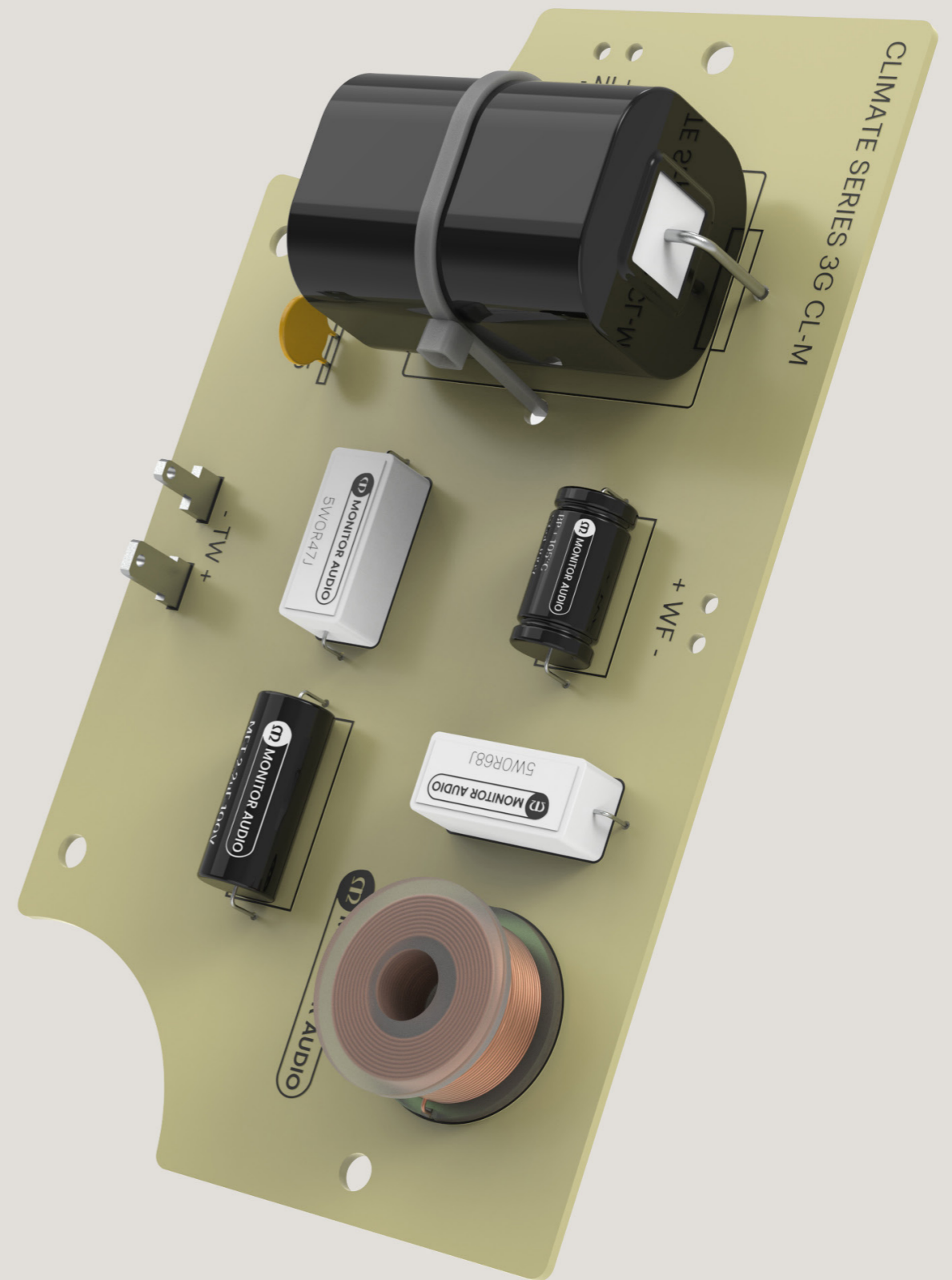


# Frequency ranges split to perfection for the purest of sound delivery.

## Crossover Design

Completing the total system approach of the Climate Series 3G and its formidable acoustic delivery is the expertly crafted crossover. Designed, voiced, and tuned by Monitor Audio's in-house acoustic engineering team, the crossover uses a selection of high-quality conductors and capacitors to ensure the purest signal delivery to each drive unit.

Climate Series 3G delivers the purity of sound and clarity found in the very best traditional premium speakers, but with significantly enhanced placement versatility – inside or out. With Climate Series 3G, it's completely up to you.









# Climate Medium – CL2 M

## Mid-sized two-way, highly versatile wall-mountable speaker

Climate Medium offers signature Monitor Audio high-fidelity sound outside, or in. Voiced and engineered by the Monitor Audio acoustic team in the same manner as any premium loudspeaker, Climate Medium delivers sonic detail and dynamic bass performance with ease. With advanced driver technology and powerful motor systems, along with an Auxiliary Bass Radiator (ABR) to extend the bass output – which is also ideal for external placement - and featuring the innovative 'Quik-Link' bracket system, Climate Medium's contemporary design blends in as seamlessly with interiors as it does with exteriors.

### Features at a glance:

- Two-way design
- Auxiliary Bass Radiator
- 1 x 165mm (6") RST II bass-mid driver
- 1 x 25mm (1") C-CAM Black dome tweeter
- Fully sealed, moulded and loaded ABS cabinet construction
- IP Rated to IP66
- Die-cast 'Quik-link' bracket system with integrated speaker wiring
- Tilt-wedge bracket 3D print design file (supplied)
- Finishes available: Matt Black and Matt White
- Packaged and sold in pairs
- 5-year Warranty









# Climate Small – CL2 S

## Compact two-way, highly versatile wall-mountable speaker

Despite its diminutive size, Climate Small packs a powerful sonic punch. Voiced and engineered by the Monitor Audio acoustic team in the same manner as any premium loudspeaker, Climate Small delivers high-fidelity performance with consummate ease. With advanced driver technology and powerful motor systems, along with an Auxiliary Bass Radiator (ABR) to extend the bass output – which is also ideal for external placement – and featuring the innovative ‘Quik-Link’ bracket system, Climate Small’s contemporary design blends in as seamlessly with interiors as it does with exteriors.

### Features at a glance:

- Two-way design
- Auxiliary Bass Radiator
- 1 x 100mm (4”) RST II bass-mid driver
- 1 x 25mm (1”) C-CAM Black dome tweeter
- Fully sealed, moulded and loaded ABS cabinet construction
- IP Rated to IP66
- Die-cast ‘Quik-link’ bracket system with integrated speaker wiring
- Tilt-wedge bracket 3D print design file (supplied)
- Finishes available: Matt Black and Matt White
- Packaged and sold in pairs
- 5-year Warranty





# Technical specifications



Model	CL2 M	CL2 S
IP Rating	IP66	IP66
System Format	2-Way	2-Way
Sensitivity (2.83v @ 1m, Installed)	85.5 dB	84 dB
Recommended Amplifier Power (RMS, Music Signal)	200 W	150 W
Continuous Power Handling (CTA 426-B)	100 W	70 W
Nominal Impedance	6 Ohms	6 Ohms
Minimum Impedance (20Hz to 20kHz)	4.8 Ohms	4.9 Ohms
Drive Unit Complement	1 x 6" (152 mm) C-CAM RST II mid-bass driver 1x 25mm (1") C-CAM tweeter	1 x 4" (102 mm) C-CAM RST II mid-bass driver 1x 25mm (1") C-CAM tweeter
Frequency Response, On-Wall (-6dB)	42Hz - 30kHz	56Hz - 30kHz
Maximum Peak SPL (AES75, Z-weighted)	110 dB	108 dB
Bass Alignment	Auxiliary Bass Radiator	Auxiliary Bass Radiator
Crossover Frequency	2.6kHz	3.3kHz
External Dimensions with all accessories fitted (H x W x D)	332 x 190 x 240mm (13 <sup>1/8</sup> x 7 <sup>1/2</sup> x 9 <sup>5/16</sup> )	247 x 140 x 217mm (9 <sup>3/4</sup> x 5 <sup>1/2</sup> x 8 <sup>9/16</sup> )
Weight (each)	4.1 kg (9 lb 1 oz)	2.7 kg (5 lb 15 oz)

## Available Finishes



White



Black

Learn more about Climate Series 3G at [monitoraudio.com/climate](https://monitoraudio.com/climate)





